

PART OF THE NW 1/4 OF SECTION 15, T.5N., R.1W., S.L.B. & M.
SUNNYSIDE MANOR SUBDIVISION – PHASE 3
 LOTS 27 TO 33

329

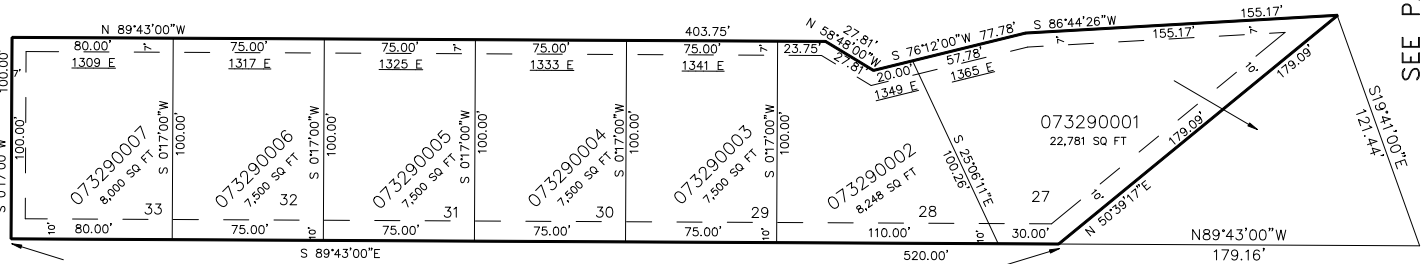
IN SOUTH OGDEN CITY

TAXING UNIT: 27

SCALE 1"=50'

SEE PAGE 311

5150 SOUTH STREET



SEE PAGE 4

10' UTILITY EASEMENT EACH SIDE OF
 PROPERTY LINE AS INDICATED BY DASHED LINES.
 ALL EASEMENTS TO BE USED FOR IRRIGATION,
 WATER LINES, DRAINAGE, SANITARY & STORM
 SEWER, POWER POLES, TELEPHONE LINES AND
 OTHER PUBLIC UTILITIES. FRONT PROPERTY
 LINE UTILITY EASEMENTS ARE 7' WIDE -
 OTHER WIDTHS OF EASEMENTS ARE AS SHOWN.

FOR COMPLETE ENG DATA SEE
 ORIGINAL DEDICATION PLAT IN
 BOOK 29, PAGE 70 OF RECORDS.